

Repair manual

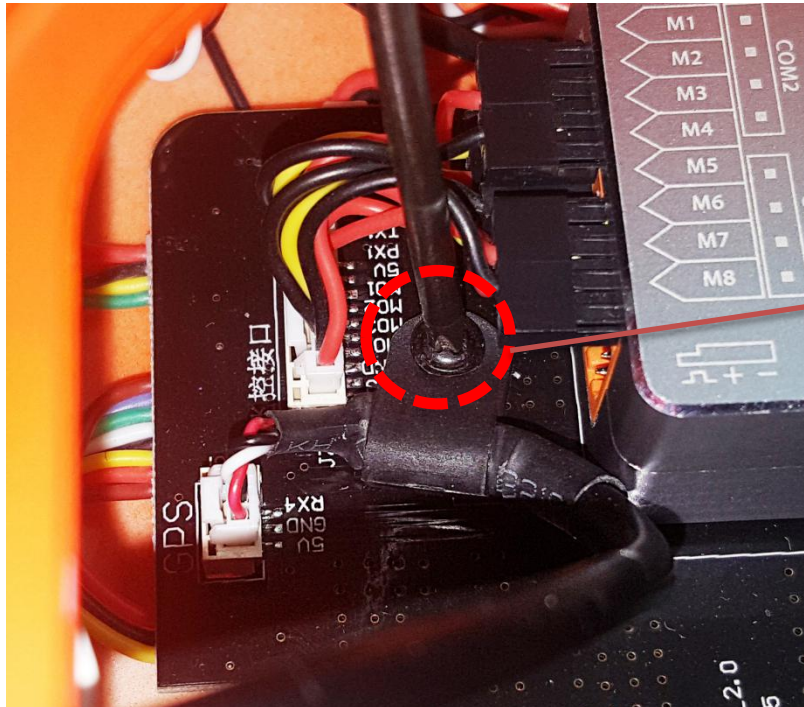
Exchange the GPS

Step 1: locate the GPS

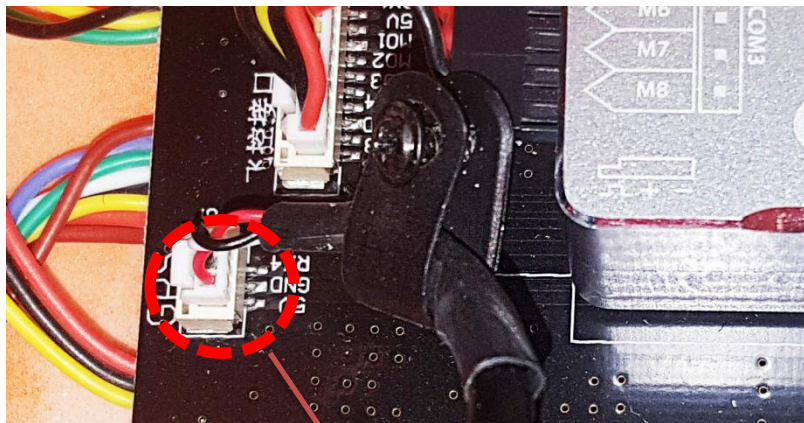


Step 2: remove the GPS

Tool: cross screwdriver #1

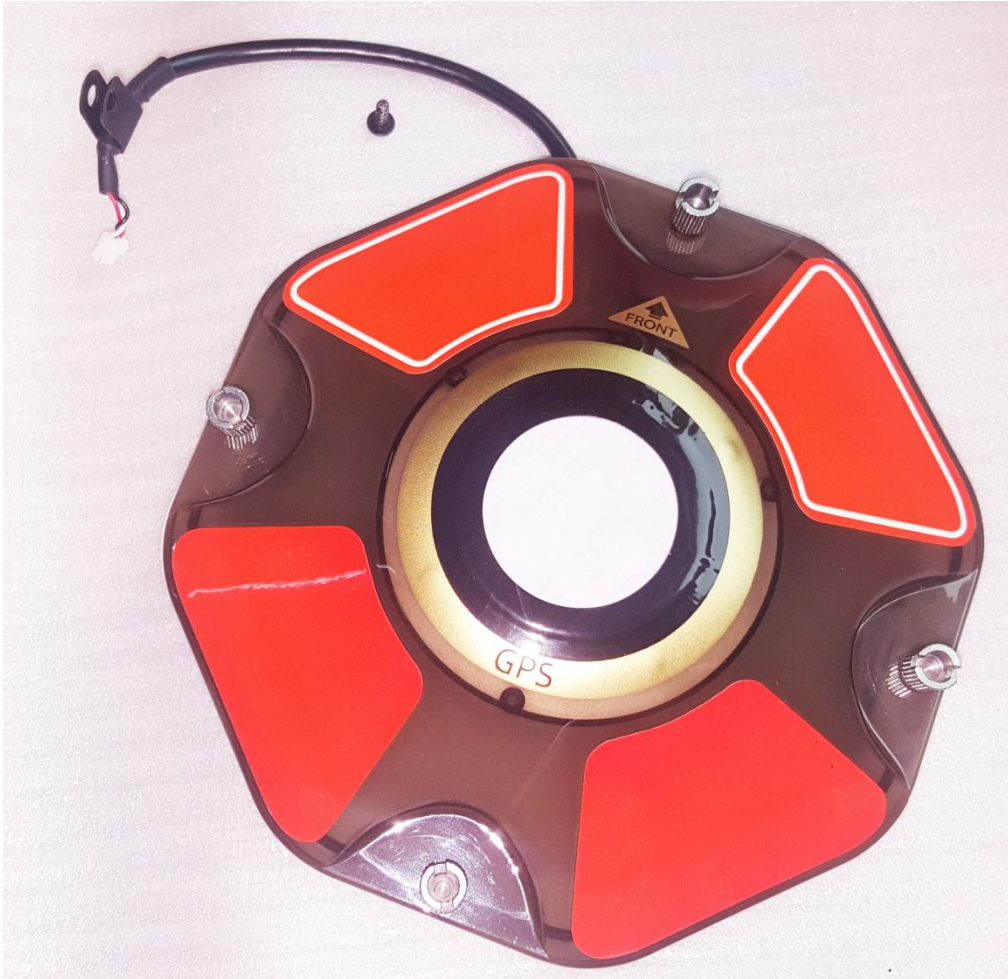


Use the cross screwdriver #1 to unscrew the screw.



Unplug the connector by pressing the shrapnel.

Step 3: prepare a new GPS

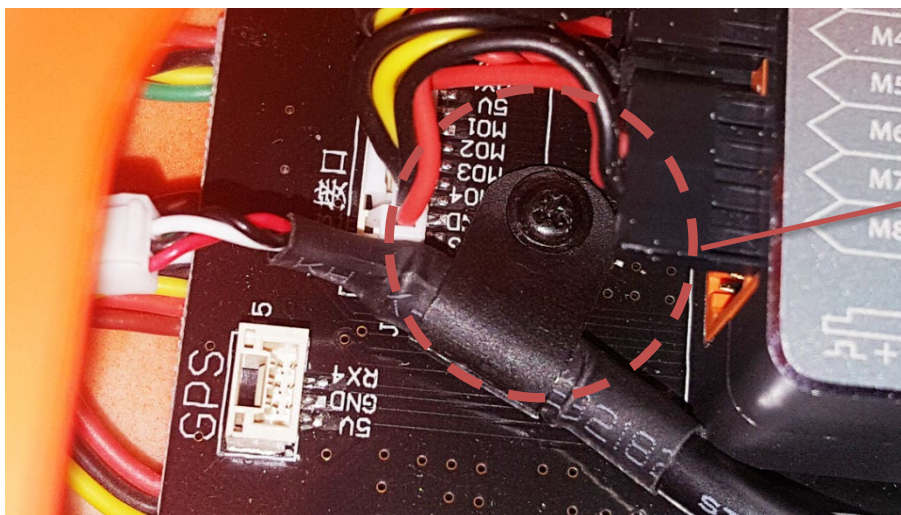


Step 4:: exchange the new GPS

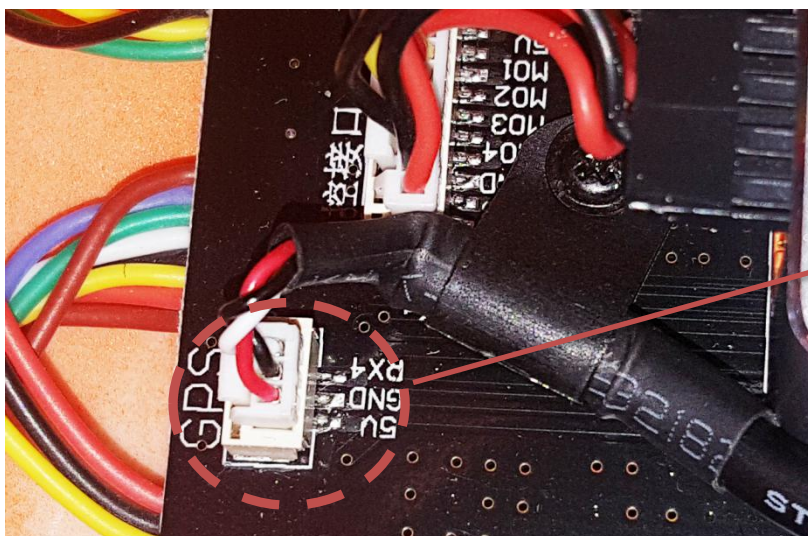
Tool: cross screwdriver #1



Put the clip on the wires as the photo beside.



Tighten the screw on the clip



Plug in the connector